

# F1-130DR-D wiring diagram and specifications

## DC Power Supply specifications

-Voltage Range 10-30VDC  
10W max.

## DC Input specifications

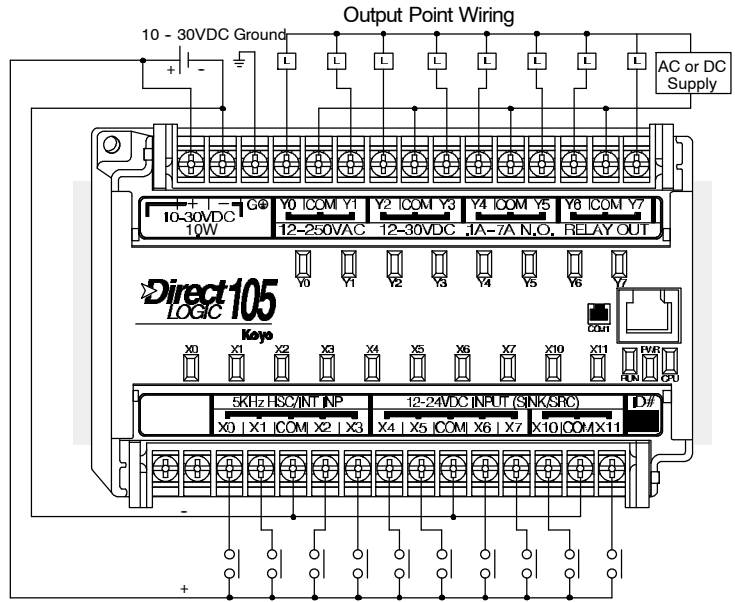
-Number of input points 10 (sink/source)  
 -Number of commons 3 (isolated)  
 -Input voltage range (X0-X3) 10-26.4VDC  
 (X4-X11) 10-26.4VDC or 21.6 - 26.4 VAC  
 -Input impedance 2.8K @12-24VDC  
 -ON current/voltage level >3mA/>9VDC  
 -OFF current/voltage level <0.5mA/<2VDC  
 -Response

	X0-X3	X4-X11
OFF to ON	50µs	2-8ms
ON to OFF	50µs	2-8ms

-Fuses None

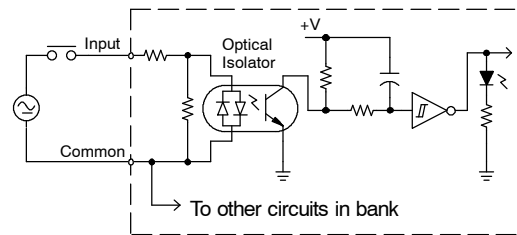
## Relay Output specifications

-Number of output points 8  
 -Number of commons 4 (isolated)  
 -Output circuitry Relay  
 -Output voltage range 12-250VAC  
 12-30VDC @7A  
 30-150VDC @0.5A, resistive  
 -Maximum voltage 265VAC, 150VDC  
 -Maximum current 7A/point (see derating)  
 -Maximum inrush current 12A  
 -Minimum load 10mA  
 -Minimum OFF resistance 100MOhm @500VDC  
 -OFF to ON response 15ms  
 -ON to OFF response 5ms  
 -Fuses None (external recommended)

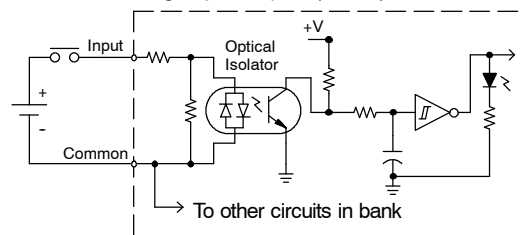


Note: Same supply can be used to power both input and output circuits because all circuits are isolated from the internal logic.

Equivalent Circuit Standard Inputs (X4-X11)



Equivalent Circuit, High-Speed Inputs (X0-X3)



Equivalent Output Circuit

