

F1-130DR wiring diagram and specifications

Power Requirements

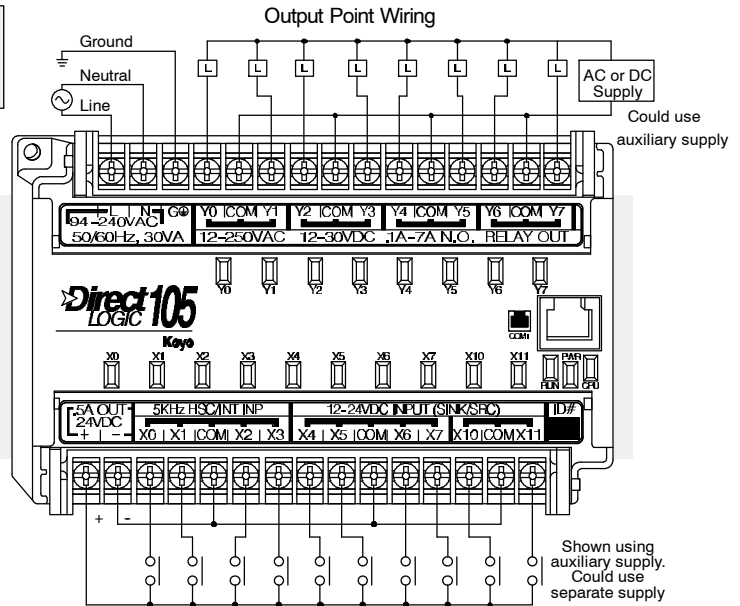
- Voltage Range 94-240VAC (30VA)
100-240VDC (30W)

DC Input specifications

- Number of input points 10 (sink/source)
- Number of commons 3 (isolated)
- Input voltage range (X0-X3) 10-26.4VDC
(X4-X11) 10-26.4VDC or 21.6 - 26.4VAC
- Input impedance 2.8K @12-24VDC
- ON current/voltage level >3mA/>9VDC
- OFF current/voltage level <0.5mA/<2VDC
- Response X0-X3 X4-X11
- OFF to ON 50µs 2-8ms
- ON to OFF 50µs 2-8ms
- Fuses None

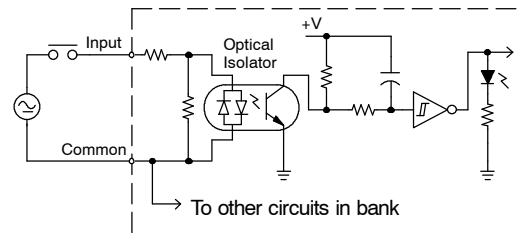
Relay Output specifications

- Number of output points 8
- Number of commons 4 (isolated)
- Output circuitry Relay
- Output voltage range 12-250VAC
12-30VDC @7A
30-150VDC @0.5A resistive
- Maximum voltage 265VAC, 150VDC
- Maximum current 7A/point (see derating)
- Maximum inrush current 12A
- Minimum load 10mA
- Minimum OFF resistance 100MΩ @500VDC
- OFF to ON response 15ms
- ON to OFF response 5ms
- Fuses None (external recommended)

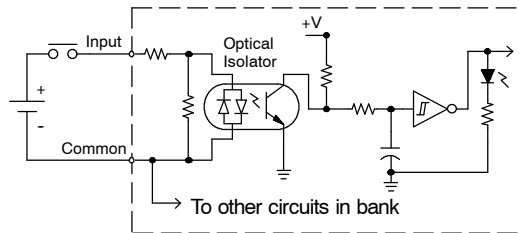


Input Point Wiring

Equivalent Circuit Standard Inputs (X4-X11)



Equivalent Circuit, High-Speed Inputs (X0-X3)



Equivalent Output Circuit

