

F1-130DD-D wiring diagram and specifications

Power Requirements

-Voltage Range 10-30VDC
10W max.

DC Input specifications

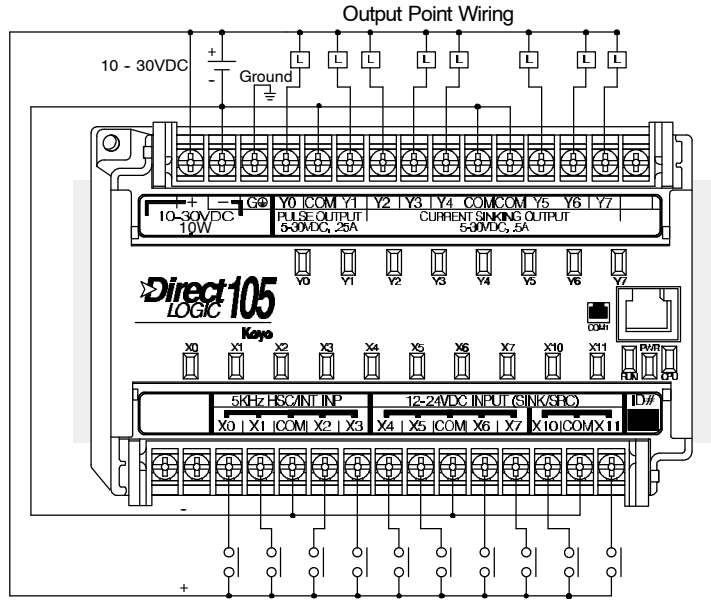
-Number of input points 10 (sink/source)
 -Number of commons 3 (isolated)
 -Input voltage range (X0-X3) 10-26.4VDC
 (X4-X11) 10-26.4VDC or 21.6 - 26.4VAC
 -Input impedance 2.8K @12-24VDC
 -ON current/voltage level >3mA/>9VDC
 -OFF current/voltage level <0.5mA/<2VDC
 -Response

	X0-X3	X4-X11
OFF to ON	50µs	2-8ms
ON to OFF	50µs	2-8ms

-Fuses None

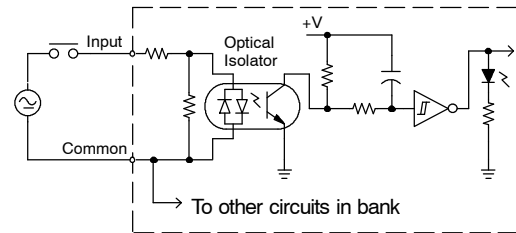
DC Output specifications

-Number of output points 8 (sinking)
 -Number of commons 3 (internally connected)
 -Output circuitry MOSFET
 -Output voltage range 5-30VDC
 -Peak voltage 60VDC
 -ON voltage drop 0.4VDC @ 0.5A
 -Maximum current 0.5A/point (Y0-Y1)
 1.0A/point (Y2-Y7)
 -Maximum leakage current 15µA at 30VDC
 -Maximum inrush current 1.5A for 10ms (Y0-Y1)
 3A for 10ms (Y2-Y7)
 0.5A for 100ms (Y0-Y1)
 1A for 100ms (Y2-Y7)
 -Minimum load None
 -OFF to ON response 50µs
 -ON to OFF response 50µs
 -External DC power required 10-30VDC
 30mA + load current
 Fuses None (external recommended)

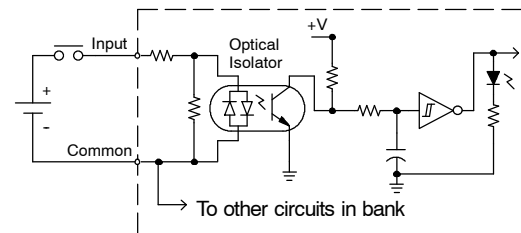


Note: Same supply can be used to power both input and output circuits because all circuits are isolated from the internal logic.

Equivalent Circuit Standard Inputs (X4-X11)



Equivalent Circuit, High-Speed Inputs (X0-X3)



Equivalent Output Circuit

