

# F1-130DA wiring diagram and specifications

## Power Requirements

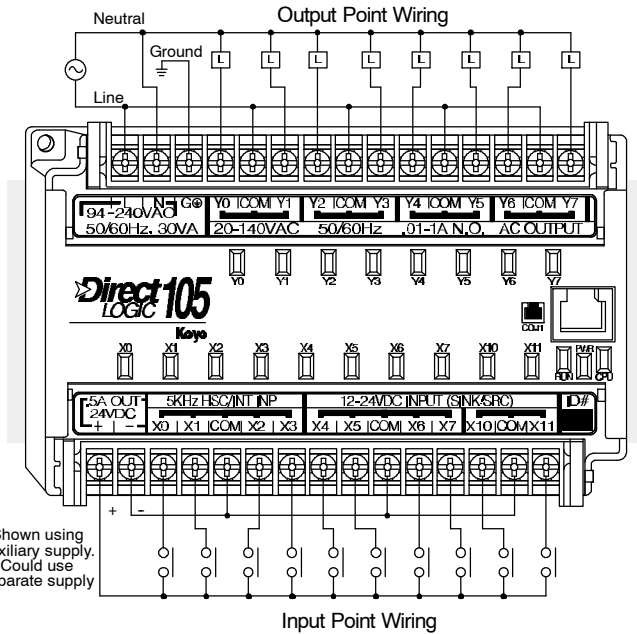
-Voltage Range	94-240VAC (30VA)
	100-240VDC (30W)

## DC Input specifications

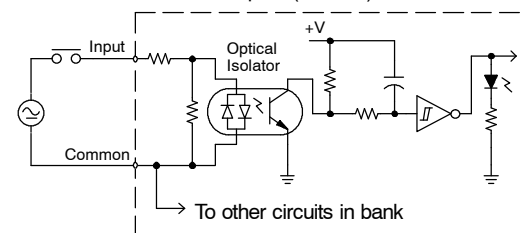
-Number of input points	10 (sink/source)
-Number of commons	3 (isolated)
-Input voltage range (X0-X3)	10-26.4VDC
(X4-X11)	10-26.4VDC or 21.6 - 26.4VAC
-Input impedance	2.8K @ 12VDC 2.8K @ 24VDC
-ON current/voltage level	>3mA/>9VDC
-OFF current/voltage level	<0.5mA/<2VDC
-Response	X0-X3   X4-X11
	OFF to ON   50µs   2-8ms
	ON to OFF   50µs   2-8ms
-Fuses	None

## AC Output specifications

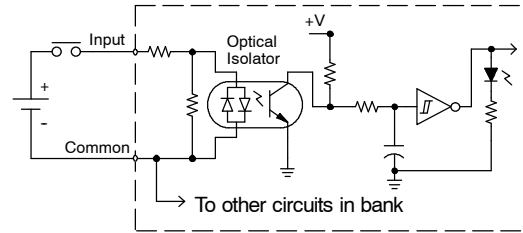
-Number of output points	8
-Number of commons	4 (isolated)
-Output circuitry	Triac
-Output voltage range	20-140VAC 47-63Hz
-Peak voltage	400VAC
-ON voltage drop	1.3VAC at 2A
-Maximum current	1.7A/point (subject to derating)
-Maximum leakage current	1mA at 400VAC
-Maximum inrush current	30A for 10ms 15A for 100ms
-Minimum load	10mA
-OFF to ON response	8.33ms @ 60Hz 10ms @ 50Hz
-ON to OFF response	8.33ms @ 60Hz 10ms @ 50Hz
-Fuses	None (external recommended)



Equivalent Circuit Standard Inputs (X4-X11)



Equivalent Circuit, High-Speed Inputs (X0-X3)



Equivalent Output Circuit

