

F1-130AR wiring diagram and specifications

Power Requirements

- Voltage Range 94-240VAC (30VA)
100-240VDC (30W)

Input specifications

- Number of input points 10
- Number of commons 3 (isolated)
- Input voltage range 80-132VAC
90-150VDC
- Input current 6mA @ 132VAC
6.8mA @ 150VDC
- ON current/voltage level >4mA/80VAC
>4mA/90VDC
- OFF current/voltage level <2mA/45VAC
<2mA/60VDC
- OFF to ON response <8ms
- ON to OFF response <15ms
- Fuses None

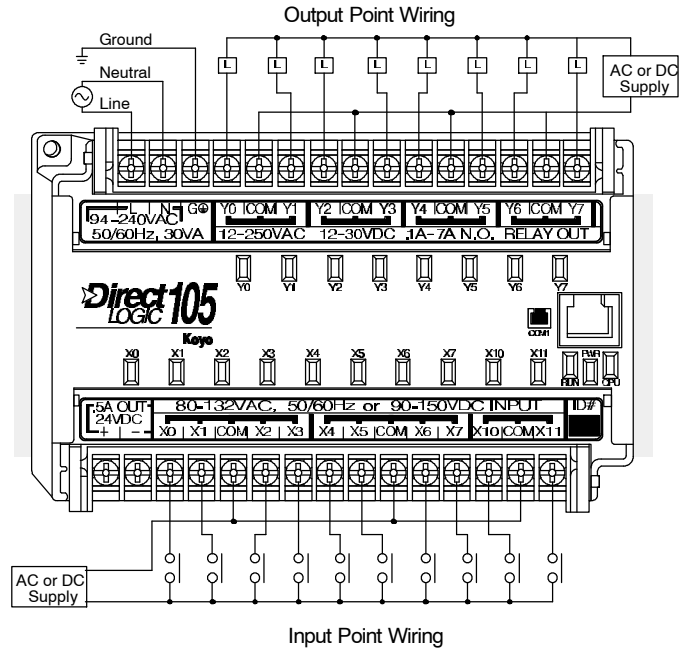
Relay Output specifications

- Number of output points 8
- Number of commons 4 (isolated)
- Output circuitry Relay
- Output voltage range 12-250VAC
12-30VDC @7A
30-150VDC @0.5A resistive
- Maximum voltage 265VAC, 150VDC
- Maximum current 7A/point (see derating)
- Maximum inrush current 12A
- Minimum load 10mA
- Minimum OFF resistance 100M Ω @500VDC
- OFF to ON response 15ms
- ON to OFF response 5ms
- Fuses None (external recommended)

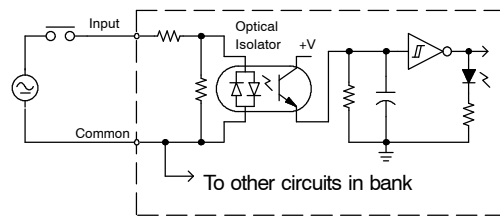
Typical Relay Life (Operations) at Room Temperature

Voltage & Type of Load	Load Current		
	50mA	5A	7A
24 VDC Resistive	10M	600K	300K
24 VDC Solenoid	-	150K	75K
110 VAC Resistive	-	600K	300K
110 VAC Solenoid	-	500K	200K
220 VAC Resistive	-	300K	150K
220 VAC Solenoid	-	250K	100K

At 120 VDC 0.5A resistive load, contact life cycle is 200K cycles.



Equivalent Input Circuit



Equivalent Output Circuit

